

Fact-Enhanced Synthetic News Generation

Kai Shu^{*1}, Yichuan Li^{*2}, Kaize Ding³, Huan Liu³

¹Illinois Institute of Technology, ²Worcester Polytechnique Institute, ³Arizona State University

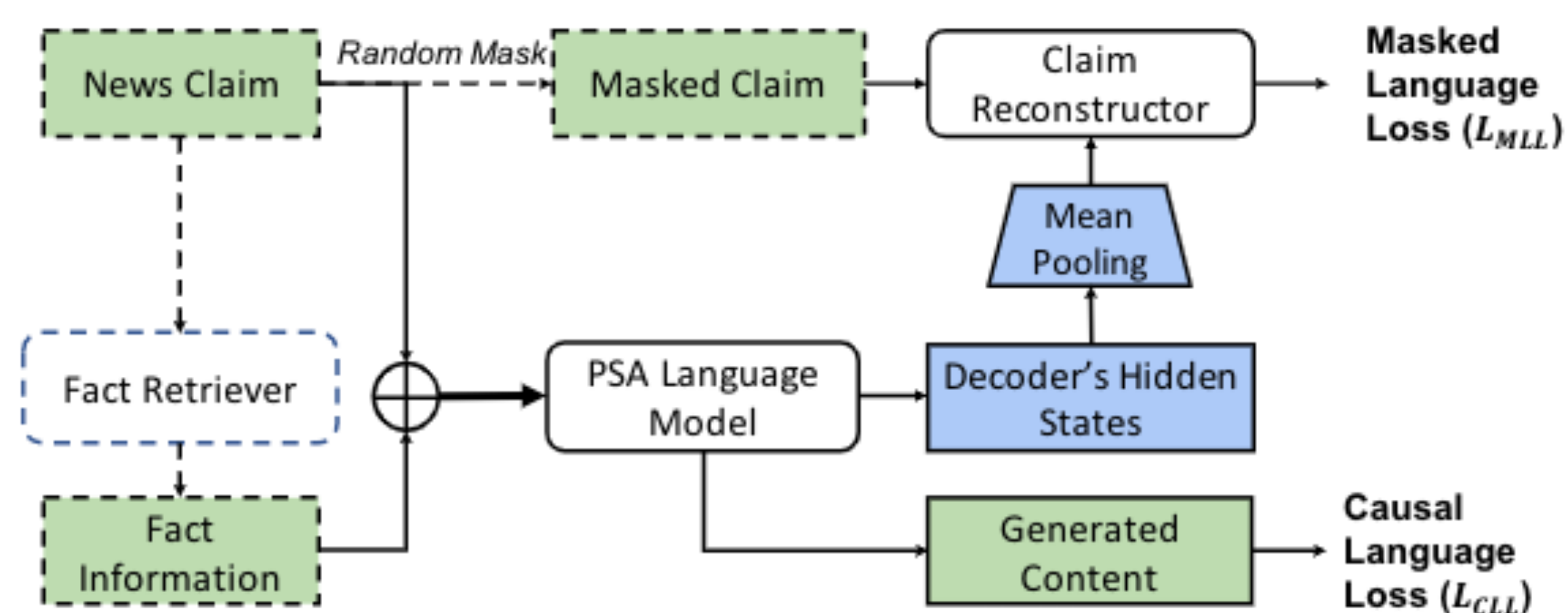
kshu@iit.edu, yli29@wpi.edu, {kaize.ding, huanliu}@asu.edu

Introduction

- Advanced language models can be abused to generate fake reviews and fake news.
- To identify the potential attack, we propose an advanced synthetic news generation framework: FACTGEN.
- Challenges in Synthetic News Generation:**
 - **Factual Inconsistency:** the generated news content contradicts or refutes the news claims;
 - **Factual Scarcity:** the generated news content misses essential details to supplement the claim.
- Contributions:**
 - A new problem of fact-enhanced synthetic news generation;
 - A principled framework - FACTGEN, generating realistic synthetic news; and
 - Comprehensive experiments on two real-world datasets demonstrating the effectiveness of FACTGEN and its defense.

The Proposed Framework - FACTGEN

Framework Structure:



- **Pseudo-Self-Attentive (PSA) Language Model:** integrating the task specific encoder and pre-trained decoder.
- **Fact Retriever (FR):** retrieving the supplement fact information to enrich the input.
- **Claim Reconstructor (CR):** reconstructing the input claims to guarantee the fact consistency.

Objective function of FACTGEN:

$$L = L_{CCLL} + \lambda L_{MLL}$$

where $L_{CCLL} = -\sum_{i=1}^M (\log P(y_i | y_1, \dots, y_{i-1}; X, F))$, and

$$L_{MLL} = \sum_{x \in X_{[Masked]}} -\log P(x | X_{[Unmasked]}, h_Y)$$

Experimental Results

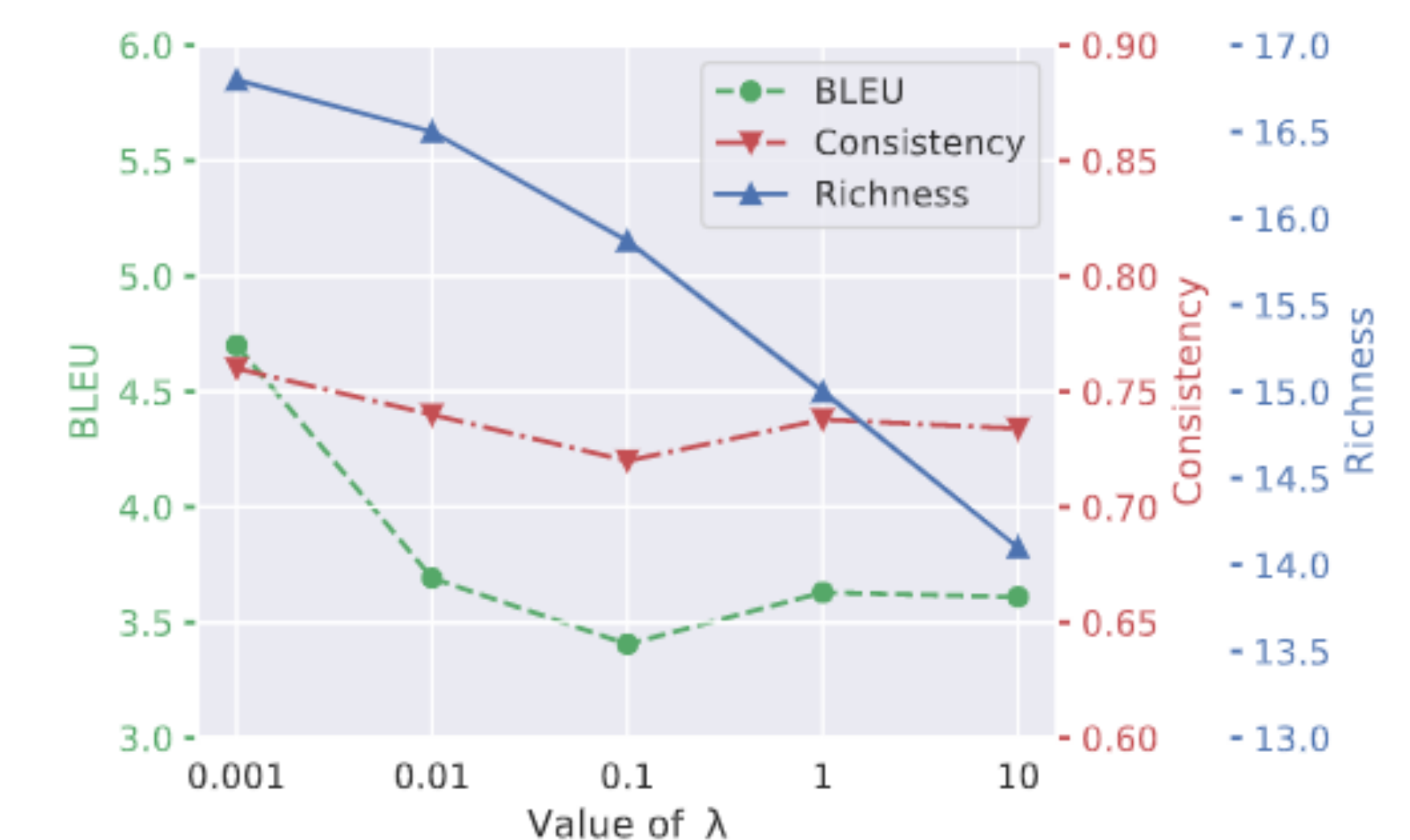
Generation Quality (more results in paper)

Models	GossipCop			CNN/DailyMail		
	Fluency	Richness	Consistency	Fluency	Richness	Consistency
CopyTransformer	0.2	11.0	0.04	0.5	9.5	0.66
ConvSeq2seq	0.5	5.9	0.09	3.3	9.5	0.44
PPLM	0.7	12.5	0.67	0.8	13.1	0.68
GPT-2	0.8	13.4	0.35	1.65	13.5	0.70
Grover	1.2	15.7	0.56	0.3	15.3	0.72
FACTGEN	2.1	14.5	0.80	4.6	16.6	0.76

Defending Against Synthetic Fake News (on GossipCop)

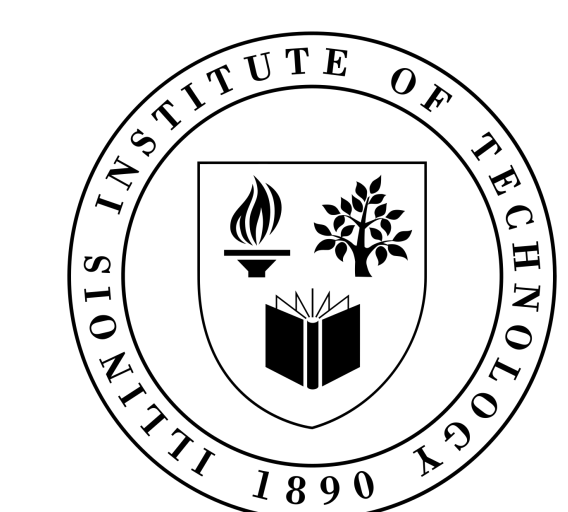
	EANN	MWSS-CNN	RoBERTa	FACTGEN _{def}
Accuracy	0.64	0.58	0.74	0.82

Parameter Analysis (on CNN/DailyMail)



Future Work

- Include other formats of external information like tabular or knowledge graph;
- Make the generated content prone to be spread.



AAAI 2021

